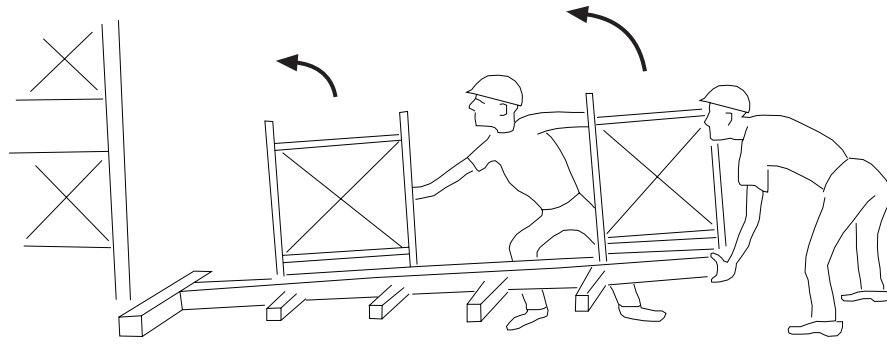
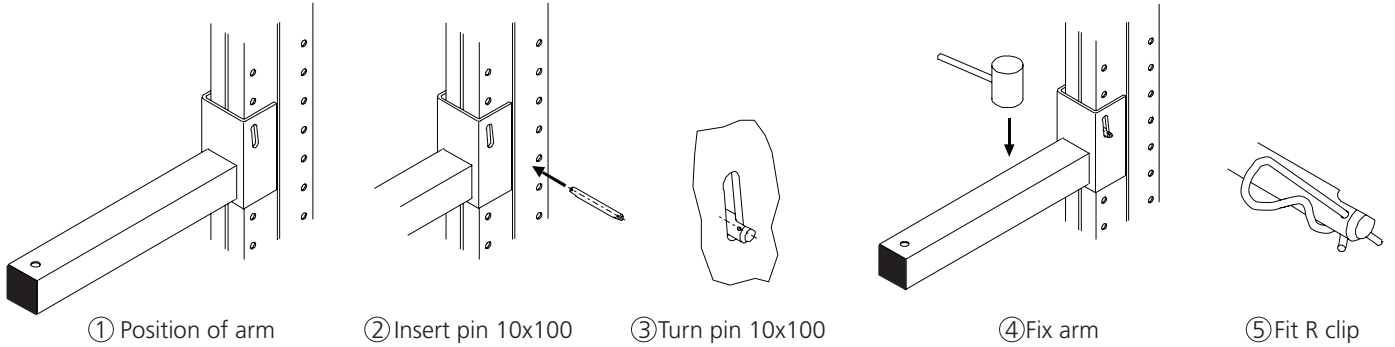


5



6

ARM ASSEMBLY



① Position of arm

② Insert pin 10x100

③ Turn pin 10x100

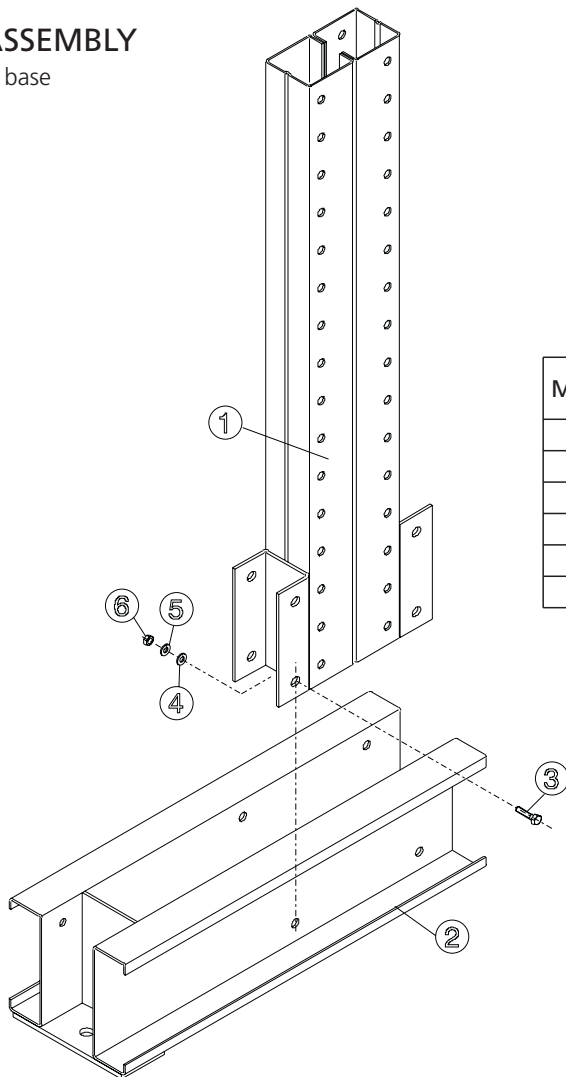
④ Fix arm

⑤ Fit R clip

7

COLUMN ASSEMBLY

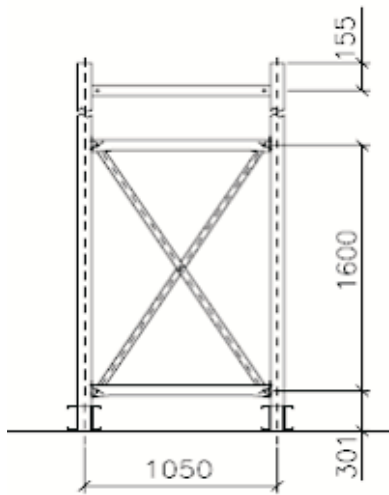
Upright joint to base



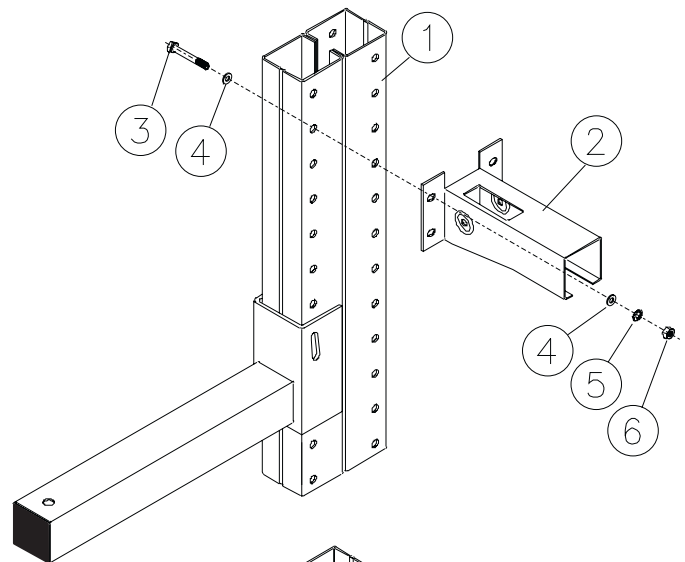
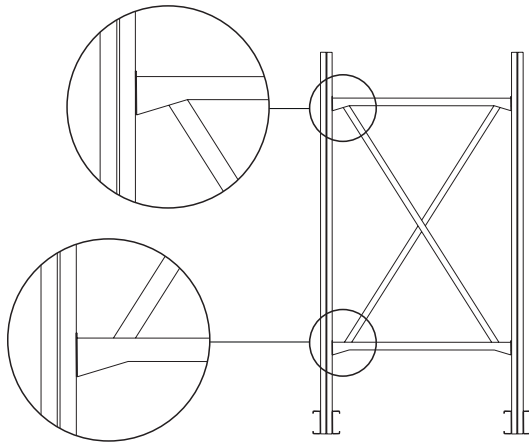
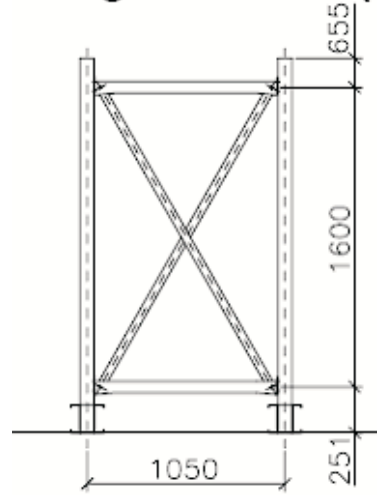
Mark	N° of Pieces	Designation	
1	1	Upright	
2	1	Base	
3	8	Bolt M10x25 DIN 933 8.8	KIT JOINT CTAB 1025
4	8	Washer 10.5 DIN 125	
5	8	Washer B10 DIN 127	
6	8	Nut M10 DIN 934 8	

BRAZING ASSEMBLY

118" high units



98" high units

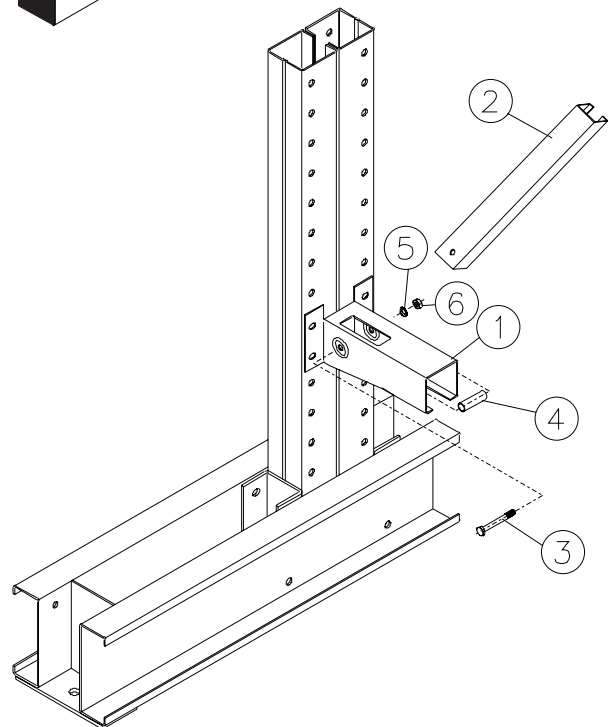


Horizontal Assembly

Mark	N° of Pieces	Designation	
1	1	Upright	
2	1	Horizontal	
3	8	Bolt M8x95 DIN 931 5.6	KIT JOINT CTF 895
4	16	Washer 8.5 DIN 125	
5	8	Washer 8.4 DIN 6798	
6	8	Nut M8 DIN 934 5	

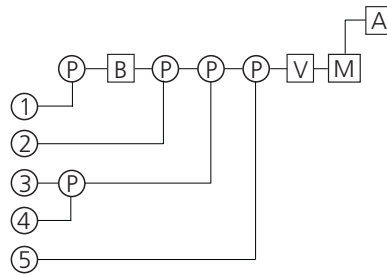
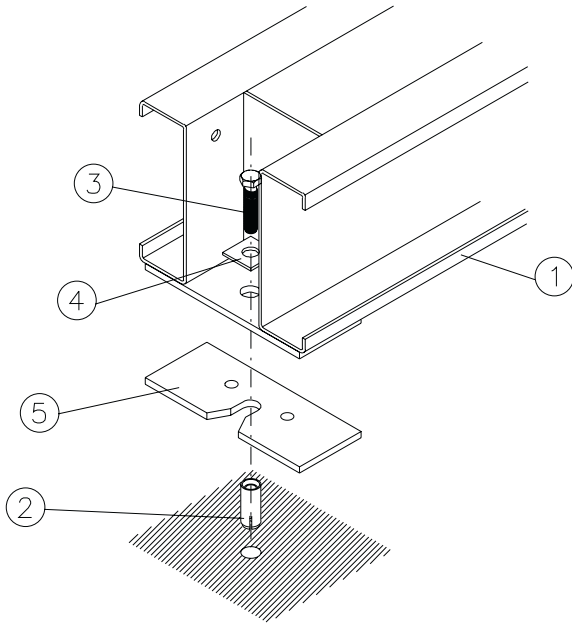
Diagonal Assembly

Mark	N° of Pieces	Designation	
1	1	Upright	
2	1	Diagonal	
3	2	Bolt M8x65 DIN 931 8.8	KIT JOINT CTX 865
4	2	Tube TB1247	
5	2	Washer 8.4 DIN 6798	
6	2	Nut M8 DIN 934 8	



The mentioned bolts are for each horizontal and diagonal unit.

ASSEMBLY OF ANCHORS AND SHIM PLATES



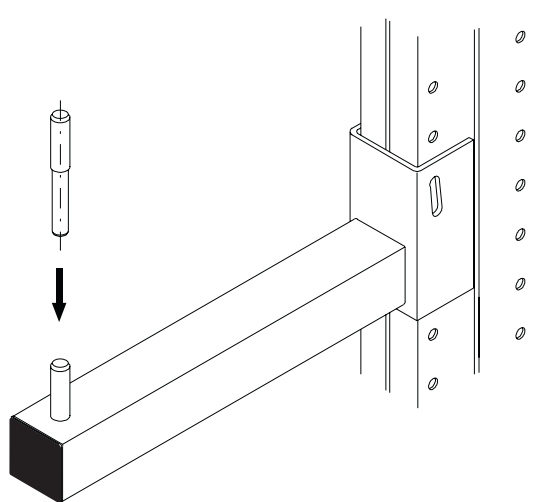
P: Positioning.
 B: Drill through (Ø depending on anchoring).
 V: Levelling and plumbness verification.
 M: Bolt assembly.
 A: Tightening Torque adjustable depending on anchoring.

Mark	Designation
1	Cantilever Base
2	Expansion Block (anchoring)
3	Bolt (anchoring)
4	Washer (anchoring)
5	Washer (anchoring)
6	Shim plates PN 1696/e

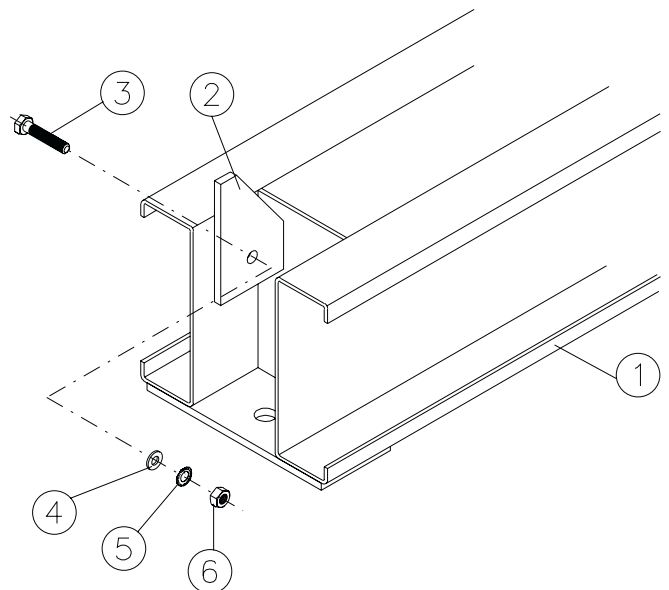
Tightening torque kg. x m. depending on anchoring	
HKD M12 x 35	4.0
HSA M12 x 110/15	5.0
HST M12/20	6.0

STOPS ASSEMBLY

Arm stop



Base stop



Mark	N° of Pieces	Designation	KIT JOINT CTQ 825
1	1	Upright	
2	1	Base Bolt 60x100x6	
3	1	Bolt M8x25 DIN 933 8.8	
4	1	Washer 8.4 DIN 125	
5	1	Washer 8.4 DIN 6798	
6	1	Nut M8 DIN 934 8	